

  
**Signature**  
PARK

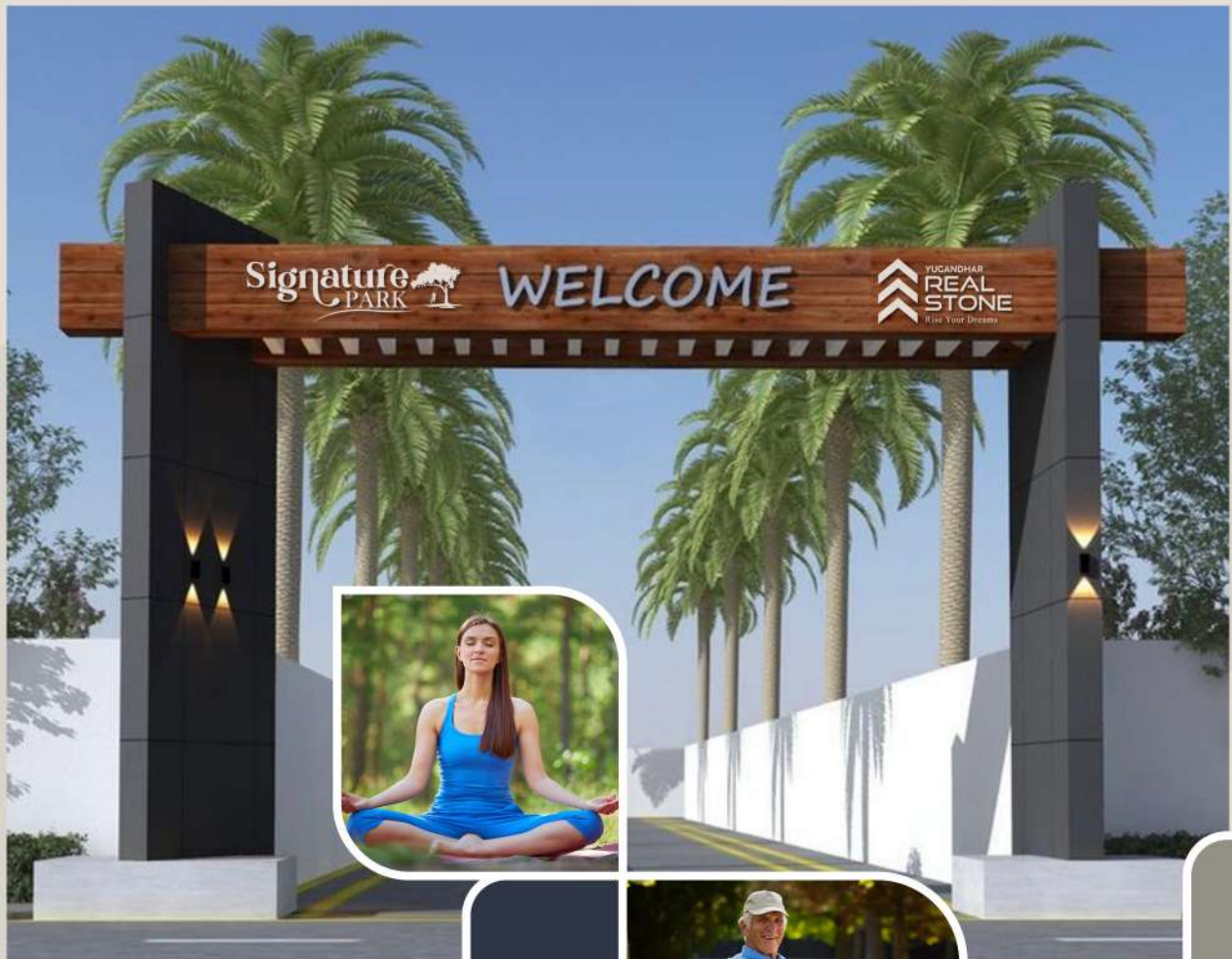
@ Akunuru, Kankipadu



*Your Perfect Address*

# YOUR DREAM HOME AWAITS IN A POLLUTION-FREE HAVEN

Look no further than Signature Park, a lush green, gated plotted development in Vijayawada's **Akunuru** neighborhood. This pristine environment offers the perfect setting for a healthy lifestyle, with easy access to top amenities. Invest now and take the first step towards building your dream home.



  
**Signature**  
PARK

@ Akunuru, Kankipadu



# Project Highlights



7 ACRES  
LAYOUT



ENTRANCE GATE  
WITH ARCH



40ft - 30ft WIDE  
BT ROADS



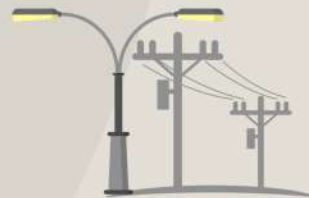
CHILDRENS  
PLAY AREA



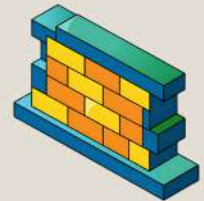
OVERHEAD WATER TANK  
& PIPELINE FACILITY



OPEN DRAINAGE



ELECTRICITY  
& STREET LIGHTS



COMPOUND  
WALL



AVENUE PLANTATION



ELDERS SITTING  
AREA



FOOT PATH



EACH PLOT WITH  
NAMING BOARDS



24/7 CC TV &  
SECURITY



## Location Proximity

2 minutes from BUNDAR ROAD

5 minutes from EAST BYPASS

20 minutes from BENZ CIRCLE

15 minutes from GANNAVARAM AIRPORT

30 minutes to CAPITAL (Through east bypass)

30 minutes to BUNDARPORT

15 minutes to KAMINENI HOSPITAL

15 minutes to VR SIDDHARADA ENG. COLLEGE

10 minutes to SIDDHARTHA MEDICAL COLLEGE (Through east bypass)



## OUR PREVIOUS PROJECTS

### Hyderabad Projects



FARMLAND @ GUDUR (VILLAGE), PHARMA CITY, HYDERABAD



VILLA PLOTS @ PULIMAMIDI, MAHESHWARAM. HMDA APPROVED PROJECT



VILLAS @ LEMOOR, HYDERABAD. HMDA APPROVED PROJECT



FARM LANDS @ PEDDAPUR, SANGAREDDY.



VILLA PLOTS @ PEDDAPUR, SANGAREDDY. DTCP APPROVED PROJECT



DTCP APPROVED VILLA PLOTS @ SAGASHIPET MUNICIPAL LAYOUT



DTCP Approved Open Plots @ Aroor

### Vijayawada Projects



Allapuram



Uppaluru



Kesarapalli



Jakkulanakkalam



Buddhavaram



@ Rangannagudem, Bapulapadu Mandal



# 52-1/1-11, Divija Complex,  
1st Floor Veterinary Colony,  
Beside Nexa Showroom,  
Vijayawada, Andhra Pradesh - 520 008.

Contact: